



Bet Yeladim Preschool

From the Executive Director

Ellen Rappoport



Important
Dates

12/27-
12/31/10 Part

Day Program Closed

12/31/10 Full Day Pro-
gram closes at 12:15

BRRRRRR!

Now that the weather is finally getting colder we'd like to request that you send your children in appropriate outdoor clothing:
warm jackets, hats and gloves!

The children go outside every day, weather permitting. Now is also a great time to replace your child's set of extra clothing.



Thank you!

**Don't
Forget**



Please remember to register for www.schools-out.com so that you can receive information regarding early dismissals, delayed openings, and school closings related to all inclement weather conditions, possible power outages, and other emergencies.

Dear Parents,

A great big thank you to our teachers for making Hanukkah such a beautiful holiday for our yeladim! The latkes were delicious, the homemade Hanukkiah are beautiful, and the gifts made by our children for their families will be cherished forever! Our four year olds even had the opportunity to visit and share Hanukkah with some of the residents of Vantage House and Morningside Assisted living facility.

Several weeks ago I attended a "Play" symposium at the University of Maryland with three of our teachers. We explored playing with different materials such as beads, pieces of foam and wood, small plastic cases, shells, rocks and many others that the adults thoroughly enjoyed, and of course, children would love. We played with the objects by ourselves, with one other person, and then with a small group. With each experience came time for reflection on what we had discovered and which skills were developed and reinforced. Our presenters drew parallels between our discussions and experiences with the seven essential life skills every child needs as presented in Ellen Galinsky's book, *Mind in the Making*. The life skills are: focus and self control, perspective, communication, making connections, critical thinking, taking on challenges, and self-direction/engaged learning. All of our play experiences presented opportunities for the development of each of these skills. Children's play is powerful and meaningful - next time your child gathers a bunch of shells and rocks or finds other "beautiful junk" don't throw it away encourage them to "play" with it and explore. Just think of all the essential life skills that they are developing!

As you know, "Bet Yeladim strives to provide the best secular and Judaic education for our children by reaching out to the community and to our families." Free flowing communication is critical to building an exceptional organization. We feel that parents can provide invaluable information about the quality of their children's program. Fifty three of our families (37%) responded to our recent Parent Survey. We take the survey very seriously and will utilize the results for our program improvement. The results have been shared with our staff. We especially appreciate the comments that were provided. The following is a brief summary of the responses that we received:

- Our families love the daily reports- some suggested that they would like them to be more individualized.
- Our families believe that our teachers know their children. Children are treated with respect and care. Also, appropriate expectations are set for individual children.
- Our families shared that it is sometimes difficult to communicate effectively with the teacher on an individual basis because they do not see the teacher at the end of the day. (Full day) Drop - off and pick-up are too hectic to actually take the time to talk. (Part-day)
- If a family disagrees with how a teacher is interacting with their child, our families feel comfortable in approaching the teacher to discuss and work together to find a solution that works for their child.
- Our families feel that our school and the teachers will work with them to help meet their child's special needs.

News from the Associate Director

Barbara Frederick



Dear Parents,

We have experienced quite a joyful time at Bet Yeladim as our children and their families have come together to celebrate the holidays of Thanksgiving and Chanukah. We always find it quite gratifying to observe the children as they participate in their classroom celebrations and to listen to their conversations which validate all that they have learned. Your presence at these events is always so heartwarming and we especially enjoy watching the expressions on your faces as you share with your children in all of their exciting classroom festivities. We hope you know that you are invited to visit your child's class at anytime during the school year. Being a Shabbat Guest is always very special and you also are welcome on any other day of the week. Thank you for your never ending support and for contributing to the loving and warm atmosphere that can be felt at Bet Yeladim.

During the month of December our four-year-old classes performed a wonderful Mitzvah! The classes visited the senior residents at Vantage House and Morningside House and celebrated Chanukah with them by lighting the Menorah and singing Chanukah songs. Pictures made by the children were given to the seniors and there was also time for socializing. Our four-year-old teachers did an excellent job of preparing the children and their performance brought smiles and laughter to many of the residents. Our children learned the value of spreading happiness and showing kindness and care to others. We were all so proud of our Bet Yeladim children and felt that this experience illustrated the values that we instill in our children each and every day.

Our second session of Enrichment Programs has begun and we are very excited about our new program Music for Life. This class has been well received by our families and we are hoping that Music for Life will become a regular option. Music for Life was recommended to us by a Bet Yeladim teacher. We always appreciate your input so please feel free to pass on any recommendations to the office.

Parent Teacher Conferences will be held the week of January 17th. Prior to the conferences you will receive your child's evaluation. During conferences your child's teacher will share the growth and progress your child has made since the beginning of the school year.

The evaluation is based on age and developmentally appropriate benchmarks which are broken down into all of the learning domains. These domains are taken from the Maryland Model for School Readiness objectives and meet NAEYC standards as well as Developmentally Appropriate Practices. Your child's teacher will post a sign-up sheet for scheduling conferences. Please see your child's teacher if the dates are not convenient for you.

Maryland State Department of Education (MSDE) has published a valuable resource, Healthy Beginnings, for parents and teachers to help nurture the tremendous potential for learning and growth that every child has and that every child is born with. Healthy Beginnings is specifically designed for infants and toddlers from birth through age three giving support around child development. The Activity Planner provides enjoyable developmentally appropriate activities that build children's skills while promoting all kinds of learning. When you have the opportunity please visit www.marylandhealthybeginnings.org and click on Healthy Beginnings Activity Planner. I hope you find this "instruction manual" helpful and educational.

May the year of 2011 bring you much happiness, memorable quality time spent together with family and friends but most of good health.

Shalom,

Barbara Frederick



Happy Birthday!

Everyone here wishes a very happy birthday to the following Bet Yeladim students who have December birthdays.

Mollie Epstein, Raymond Feinber, Jake Foreman, Carly Glassband, Aidan Hennessy, Catherine Rowe, Brennan Seitchik, Henry Wheatcroft and Emily Zagnit!

If we've missed anyone's birthday we're sorry!
Please let us know.

Become a Birthday Book Buddy!



Honor your child's birthday by purchasing a book for \$18 (Chai) to celebrate his/her birthday. We will put a book plate commemorating your child's special day inside a new hardcover book that will be kept in his or her classroom for everyone to read and enjoy. What a great way to say happy birthday and support Bet Yeladim at the same time!

For more details, call Barbara Davis at (410) 997-7378

Bet Yeladim Donation Form

Please complete this form and return it with your check payable to Bet Yeladim.

Date: _____

Name: _____

Phone: _____

Send card to: _____

Address: _____

In Honor of: _____

In Memory of : _____

Please apply my donation to:

\$_____ Birthday Books (\$18.00)

See information on this page.

\$_____ Annual Fundraising Donation

Board suggested \$125.00 for 2010-2011 fundraising donation to be used for playground and resource materials.

\$_____ Oscar Litwak Playground Fund

Funds used for the upkeep and purchases for our playgrounds in memory of Oscar Litwak, a former Bet Yeladim student.

\$_____ Scholarship Fund*

Funds used to assist families with the tuition fees.

\$_____ Teachers' Wish List

\$_____ Tzedakah Fund

Funds used to support various charities throughout the school year.

\$_____ Bet Yeladim's Choice

Bet Yeladim will determine where these funds are most needed at the time of distribution.

*Critical need at this time

Thank you for your support and generosity!



A heartfelt thank you to the following families for their kind and generous donations:

To Barbara Frederick for her donation in memory of Eric Carter, Nicky Rovinsky's Uncle and Georgeanne Carter's brother.

To William and Becky Atwell for their donation in honor of their grandson Dylan Atwell.

To Ronald Gordon for his donation in honor of his granddaughter, Mollie Gordon.

To Ellen and Harold Rappoport for their donation in honor of the birth of Barbara and Barry Goodstadt's grandson, Max.

To Marilyn Singer for her donations in honor of the birth of Barbara and Barry Goodstadt's grandson, Max and for her donation of Shabbat candles.

To Jennifer and Patrick Herwig for their donation.

To Lori Grazio and Jason DeRoche for their donation in honor of Nate and Catherine's birthdays and for their donation to our Scholarship Fund.

To Helena Phillips and Siobhan D'Andrade for their donation in memory of Jessica Zirkle's grandfather, David Sacks.

To Marcia and David Adler for their donation in honor of the birth of Barbara and Barry Goodstadt's grandson, Max.

To Rob and Michele Levine for their donation in memory of Carolyn Linthicum; and for their donation of toys.

To Bonnie and Robert Chernikoff for their donation in honor of their grandson, Max Zang.

To Howard and Sheila Sandbank for their donation in honor of Dylan and Austin Levine.

To Judith Iliff and Jacques Fein for their donation in honor of their granddaughter, Adrienne Fein.

To Milana and David Klein for their donation of toys.

To Roseanne Philadelphia for her donation of books.

To the Kutler Family Philanthropic Fund for its' donation through the Donor Advised Fund.

Mazel Tov to the following families on their wonderful nachas!

To Alicia and Oren Blam on the birth of Aaron's baby sister, Abby.

We will say Mishebeirach for David Klein, Sammy's dad, and wish him a quick and complete recovery from his surgery.

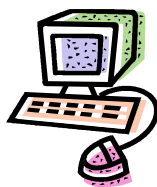
From Executive Director, cont'd from page 1

- Our families feel that the administration is responsive to their concerns and the needs of their family.
- Our families are pleased with their child's Judaic education. Some comments –
 - No change necessary... good foundation for my child... amazed that my child is speaking Hebrew...maybe label objects in the room to include Hebrew.
- When families were asked what impressed them about their child's classroom environment, they shared the following-
 - We love the nurturing atmosphere—very welcoming
 - Brightness, cleanliness and warmth of staff
 - Abundance of interesting open-ended toys, Learning through play
 - How kids learn to love one another as individuals
- When families were asked what they would like changed in their child's classroom environment-
 - Nothing - We had high expectations for Bet Yeladim which have been exceeded in every day.
 - Less children in classroom, less hectic.
- Our families feel a part of the school and a member of the Bet Yeladim family.
- When asked if families had additional changes or suggestions for the Board of Directors, Administration or teachers that would enhance their child's or family's experience at Bet Yeladim they shared:
 - Can we stay open until 6:30?
 - Concerns about the parking lot being crowded and dangerous especially at drop-off and pick-up for part day program. Also, for part-day -hallway is crowded.
 - Don't change anything
 - Credit card payments
 - Maybe the four year olds can help mentor some of the young children through play

We thank you for your support and input! We are in the process of studying the parking lot situation and will keep you posted as to recommendations that we may receive from the traffic control division of the police department.

Happy New Year to all of our families!!!

Shalom,



Visit us on the Web!

www.betyeladim.org

Newsletter, school calendar,
fundraisers & more!



BET YELADIM PRESCHOOL 2010-11 DIRECTORY and NEWSLETTER ADVERTISING

Do you know any local business owners that would love an inexpensive way to market their company to over 150 Howard County families throughout the upcoming year? Advertising in the Bet Yeladim newsletter and directory is easy! For a small fee, advertisers will be featured once in the student directory, and once a month in the monthly newsletter (from October 2010 through June 2011).

Please consider placing an ad for your business, or passing this along to your dentist, your realtor, your neighbor who paints children's furniture, your accountant, your friend who's trying to start up a new company, etc. Please help us spread the word. All ads are due no later than 5:00 pm on Friday, October 8th.

COMPANY/BUSINESS INFORMATION:

Company /	
Business Name: _____	Type of Business (i.e Dental Office, Law Firm, etc.): _____
Address: _____	_____

CONTACT PERSON'S INFO:

Name: _____ Phone: _____ E-mail: _____

SIZE OF AD TO BE PURCHASED:

- Business Card Size (~3 1/2" x 1 1/2") For \$25.00/year
 Quarter Page (~4 1/2" x 3 3/4") For \$50.00/year
 Half Page (~5 1/2" x 8 1/2") For \$100.00/year

Bet Yeladim Preschool will publish your Advertisement (Ad) in the School Directory and in the monthly Newsletter (Kinder Kibbitz). The Directory is published once a school year, while the Newsletter is published monthly from October until June. Your Ad will appear in the October 2010 issue of Kinder Kibbitz and will run through June 2011. The Directory and Newsletter are received by over 150 families in Howard County.

Please complete this form and return with a check made payable to Bet Yeladim. For best resolution, please e-mail camera-ready artwork at 300dpi resolution (in .pdf or .jpg formats) to betyeladim1@gmail.com. Business cards can be accepted, but please be aware that the resolution may not be as clear as if you send camera-ready artwork.

Completed form, check, and artwork must be received no later than 5:00pm on Friday, October 8th.

If you have any questions, or want an additional form, please do not hesitate to email:

Wendy Himmel wmhimmel@yahoo.com

Mail form and check to :
Bet Yeladim Preschool

Attn: Directory & Kibbitz Ads
8910 State Route 108, Suite D
Columbia, MD 21045

CHECK OUT ALL THE WAYS YOU CAN CONTRIBUTE TO BET YELADIM WITHOUT SPENDING AN EXTRA DIME!!!

GIANT-Bonus Card

Simply use your Giant bonus card and earn cash for Bet Yeladim. Go online to www.giantfood.com and designate Bet Yeladim as your school.

Bet Yeladim's school ID # is: 03937.

You must re-designate the school each year!

GIANT GIFT CARDS

Do you shop at Giant? Then purchase a card through Carol Jackson . Giant will donate 5% of face value of gift card purchases to Bet Yeladim.

SAFEWAY, SHUTTERFLY, & OFFICE MAX

Participating merchants such as Safeway, Shutterfly, and Office Max will make contributions based on your purchases when you designate Bet Yeladim as your school. All you have to do is register Safeway, debit, and credit cards and Bet Yeladim can earn money. Go to www.escrip.com to register.

Bet Yeladim's ID # is: 6475049.

HARRIS TEETER

Simply use your VIC card and earn cash for Bet Yeladim. Go online to <http://www.harristeeter.com> and designate Bet Yeladim as your school

Bet Yeladim's ID # is: 7893.

TARGET REDCARD

Sign up and use your REDcard or Target Visa and Target, along with Target.com, will donate 1% of your purchases to Bet Yeladim. Log onto www.target.com/tcoe and designate Bet Yeladim as your school.

Bet Yeladim's ID # is 21920.

FOOD LION

Simply use you Food Lion MVP card and earn cash for Bet Yeladim. Go to www.foodlion.com and click on "fundraising" on the left hand menu and then choose "Bet Yeladim" as organization. Enter your 12-digit number to link your card to our school. At least 25 MVP cards need to be linked to Bet Yeladim in order to participate.

BOX TOPS COLLECTION

Clip this logo off of participating grocery products and drop them off at the designated basket outside Carol Jackson's office. Each BoxTop is worth 10 cents or more! Go to www.boxtops4education.com for more information on participating products.



In the Jewish Community Howard County

Columbia Jewish Congregation
(410) 730-6044
www.columbiajewish.org

Columbia Jewish Congregation, a 35-year-old congregation, is affiliated with the Reconstructionist movement. We emphasize diversity and inclusiveness, and are dedicated to learning, celebrating, and deepening our practice of Jewish tradition in contemporary life. You do not need to be a member to join us for services or activities, so come see what we are all about!

CJC Shabbat Services with Rabbi Sonya Starr, Cantor Jan Morrison, and Rabbi Bob Saks Fridays at 8:00 pm, Saturdays at 10:00 am.

Monthly Tot Shabbat - Resumes in the Fall. This is a wonderful Shabbat service for preschoolers and their families.

L'Dor Va'Dor Service – An intergenerational service for the whole community- led by the Rabbi with participation from Hebrew school students and congregants.

CJC Hebrew School- The Columbia Jewish Community School (CJCS), founded in 1971, is the first Jewish religious school established in Howard County, Maryland. The mission of CJCS is to provide Jewish education to children ages 4 – 18 and their families that leads to a lifelong love of Judaism. We teach Jewish beliefs and practices in an accepting and positive manner, emphasizing community, culture and spirituality in a Reconstructionist context. Contact the CJC office to learn more about the school's offerings. You need not be a congregation member to attend CJC's Hebrew School.

CJC Middle and High School Youth Group - Year round activities including movie nights, skating, cultural events, community service, and more. Visit the website or contact the CJC office to find out about the Youth Group's offerings.

CJC Adult Education - CJC conducts adult education classes throughout the year for members and non-members. Visit the CJC website to see what interests you.

Beth El Howard County Chavurah
(410) 484-4543
www.bethelbalto.com

Looking for an innovative, engaging Hebrew School program in Howard County? Beth El's Howard County Chavurah has what you're looking for. Classes are held mid-week in Howard county for preschool-7th grade. Classes are led by experienced Jewish educators. Children learn through active participation and hands-on learning experiences. B'nai mitzvah tutoring available. Come find out about the Hebrew School program where children are excited to attend class each week! Family programs, adult education, Shabbat dinners and holiday celebrations are all part of the fun! Synagogue membership not required for participation in the Howard County Chavurah. All families welcome! For more information, contact the program coordinator, Randi Albertsen, rbknla@verizon.net, 410-370-2837

Shalom Aleichem
(410) 730-3917
www.shalomaleichem.org

Shabbat Services — Led by Rabbi Heiligman and Cantor Baer on the first and third Fridays of each month at 7:30pm at the Owen Brown Community Center.

Sunday School — Meets two Sundays per month, grades K-7 at the Florence Bain Senior Center.

Hadassah, Howard County Chapter
www.hocohadassah.org
info@hocohadassah.org

Beth Shalom Congregation
(410) 531-5115
www.beth-shalom.net

Beth Shalom Congregation is the center for Conservative Jewish life in Howard County, offering a wide variety of services from religious to secular, social to educational, and profound to fun! Programs are designed to support Judaism through all ages and stages of life. Visit our award-winning adult education program or our creative and exciting religious school. All are welcome!

Gesher "Shabbat Lights" Friday Night Service - For grades K - 2; Service will include prayers, songs and fun for Grades K – 2. Families are encouraged to join the main service at conclusion of this service. (The 3rd Friday each month at 7:30 pm)

Family Service - For ages 0 - 5 and their families. The services will include prayer, songs, stories and dance - led by Fern Cohen. (The 4th Saturday each month at 11:00 am)

Tot Shabbat - Prayers, songs & fun for ages 0-5 and family, led by Cantor Alan Rubinstein. (The 2nd Friday each month at 7:00 pm)

Preschool T.L.C. Story Time - "Tales for Loving Children": Preschoolers with parents and family members invited to enjoy stories with a lesson – kindness, honesty, sharing, charity, caring for the Earth are some of the themes children's Librarian, Irva Gabin, will present. (the 3rd Saturday each month at 11:00 am)

Bet Aviv Congregation
(410) 992-9994
www.betaviv.org



In the Jewish Community Howard County

Temple Isaiah
(301) 317-1101
www.templeisaiah.org

The Temple, a traditional Reform congregation, was founded in 1970. Our families come from diverse backgrounds and we seek to create a warm, friendly atmosphere where each person can explore Judaism and enrich his/her life through the joy and beauty of our faith. Our motto, "Living Torah, Being Torah," demonstrates our commitment to Torah values and spirituality within the framework of the modern Jewish experience.

Religious School

The Temple wants our children to be touched by the special joy and blessing of our tradition. The curriculum is designed to foster and expand our children's knowledge of Torah, Hebrew and t'filah, applying this knowledge to an understanding of the holidays, history of the Jewish people, the State of Israel and personal spirituality. Throughout the year, students participate in workshops and field trips. We invite guest artists, speakers, performers and authors to share their special talents and to develop an appreciation of Jewish culture. Because Temple Isaiah is committed to strengthening the Jewish family, we plan activities and lessons for the whole family. Creating a Jewish family album, studying weekly Torah portions with a guided text, or creating a challah cover are just some of the fun activities that our families participate in together.

Family Shabbat Service

With Rabbi Mark Panoff and Guitar Dave.
4th Friday of the month at 7:30pm.

Tot Shabbat

Resumes in the Fall.

A fun way to celebrate Shabbat with prayers, crafts, songs and story time. Perfect for preschoolers and their families.

Shabbat Service

With Rabbi Mark Panoff and Cantor Rebecca Grad, every Friday night at 8:00pm.

Oseh Shalom
(301) 498-5151
www.osehshalom.org

Oseh Shalom is a vibrant, inclusive Reconstructionist synagogue, in Laurel, Maryland, with members from Howard, Montgomery, Prince George's County and beyond. We are dedicated to providing a supportive community for celebrating Jewish life through prayer, learning, cultural exploration and social action.

Tot Shabbat

This fun and engaging 45-minute program includes stories, songs, reflection, prayer and movement for children ages 2-5. It is led by Jeremie Lipczenko, a seasoned educator & Religious School teacher, with help from Rabbi Heifetz, Cantor Bernhardt and musically talented congregation members. The program occurs on the first Saturday of each month at 10 AM.

Family Shabbat Service

This all-ages service includes songs and stories for all ages, and often participation by our Religious School classes. This 45-minute service occurs on the first Friday evening of each month at 7:30 PM.

Congregational Shabbat Dinner

Please join us for a celebratory Shabbat meal most often on the first Friday evening of each month, starting at 6 PM, just before the 7:30 PM Family Service. For more information or to RSVP, please contact the synagogue office at 301-498-5151.

Weekly Shabbat Services

Shabbat services at Oseh Shalom regularly include guitar playing, spirited singing, traditional prayer in Hebrew and English, supplementary poems and readings, reflection, contemporary explanations, story-telling, discussion, and study. Children of all ages are welcome to attend. If children wish to take a play break or make noise, we invite parents to accompany them to our 'quiet room', a play area where you can watch services through a large glass window and listen through speakers. Shabbat services begin at 10 AM every Saturday morning and at 8 PM every Friday evening (except the first Friday of the month, when the 7:30 PM Family Service is the only prayer service).

Oseh Shalom Religious School

Oseh Shalom invites participants of all

ages to join in for study and learning in a fun, inclusive environment. Our youngest students, age 3-5, are introduced to Jewish learning through a play based program offered twice a month taught by Risa Kipnis and Cindy Selber. School age children, grades K-2nd grades attend our award winning Religious School program on Sundays and our 3rd-7th grade kids attend on Sunday and Wednesday. We offer a home school program for families who find it difficult to attend the mid-week session but strongly encourage attendance if possible. Teens join our spirited confirmation classes that blend a wonderful dinner option with topical discussions and a range of classes with ample time to socialize and make friends with others on Tuesday nights.

Calah Congregation

(410) 792-8029

www.calahcongregation.com

Calah is an unaffiliated liberal Jewish congregation that meets two Fridays/month at the Owen Brown Interfaith Center. We welcome all who wish to celebrate Jewish heritage. Services combine traditional and modern elements, and emphasize congregational participation, with readings and communal prayers in Hebrew and English. Our aim is to keep membership costs low while keeping the quality of the synagogue high. The congregation consists of single- and two-parent families, singles and couples of all ages. Interfaith and unaffiliated individuals are welcome. High Holy Days and major holidays are celebrated. We also offer several religious, educational, cultural, social and community service activities. Shabbat services are led by highly trained and experienced lay and professional leaders. Clergy are available for baby naming, wedding and funeral services, and B'nai Mitzvah tutoring.

Calah Sunday School — Ages 5-13, meets twice a month and leads to a B'nai Mitzvah.

Support the Advertisers
that Support
Our School!

Insured

MHIC # 70338

VISA
MasterCard
DISCOVER

**HANDS
ON
PAINTERS**

INTERIOR & EXTERIOR
PAINTING

- 🔧 DRYWALL REPAIR
- 🔧 POWER WASHING
- 🔧 WALLPAPER REMOVAL
- 🔧 CARPENTRY

410-242-1737

Free Estimates/ No Subcontractors
"ASK ABOUT OUR WINTER SPECIAL"

MILITARY DISCOUNT www.HandsOnPainters.com

BEST OF BALTIMORE WINNER

SCD

KATKOW
DENTISTRY

TELEPHONE (410) 730-2020
www.katkowdentistry.com

ERIC A. KATKOW, D.D.S., F.A.G.D.
LAWRENCE A. KATKOW, D.D.S.
GENERAL DENTISTRY

SNOWDEN PROFESSIONAL CENTER
8600 SNOWDEN RIVER PARKWAY
SUITE 106
COLUMBIA, MARYLAND 21045

